

# IN THE KNOW

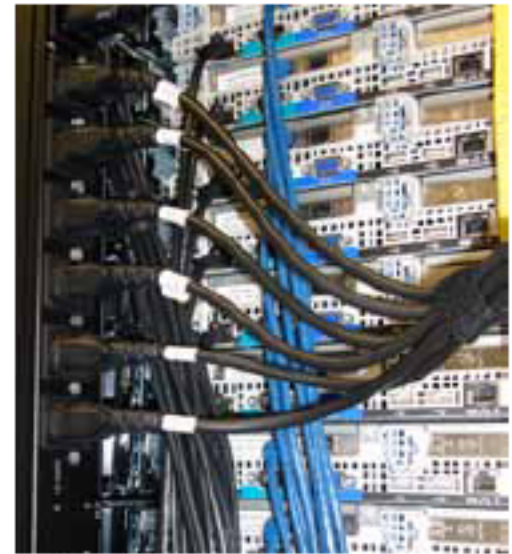
## Advantage Futures News & Announcements

### ADVANTAGE FUTURES BRINGS LIFFE TO FRANKFURT

Advantage Futures provides faster market access to NYSE Liffe for Equinix - Frankfurt customers

In November 2010 Advantage Futures added cross-connect access to NYSE Liffe from their Equinix Frankfurt (FR2) data center. Equinix, a provider of global data center services, was chosen by NYSE Liffe to offer cross-connect access in Frankfurt. Advantage clients trading NYSE Liffe can now utilize the Advantage Futures cross-connect for lower latency access to the Liffe global derivatives trading platform. Prior to the launch of the new Liffe market connectivity from Equinix Frankfurt (FR2), traders used traditional long-haul infrastructures to connect to London. This new setup enables Advantage Futures clients within the Equinix Frankfurt (FR2) data center to directly connect into the Liffe network to allow lower latency, thus improving execution speed and stability—showing once again that Advantage Futures remains committed to providing its clients fast, reliable connectivity.

*Advantage Futures maintains an advanced, robust network designed to maximize trading speed. View all exchange connectivity at: [www.advantagefutures.com/Tech\\_Exchange\\_Connectivity.html](http://www.advantagefutures.com/Tech_Exchange_Connectivity.html)*



### ADVANTAGE FUTURES ADDS STELLAR TRADING SYSTEMS TO ITS LINEUP OF FRONT-END APPLICATIONS

Advantage Futures expanded its array of front-end applications with the addition of Stellar Trading Systems. Stellar specializes in fast, powerful trading systems for the high frequency, high volume, low latency trader. These systems provide futures, options, equities and treasuries capabilities to professional traders around the globe.

Stellar offers a complete trading system solution. The intuitive front-end with comprehensive order and risk management delivers industry leading performance and progressive trading capabilities. Stellar emphasizes speed -- displaying market data and routing orders quickly and efficiently. The Stellar architecture places the complexities and workload of the trading system onto the servers which allows the front-end to focus solely on trader interaction. Every aspect of the front-end is customizable so traders can tailor the screen layout to suit their personal preferences.

With this introduction, Advantage clients gain access to Stellar's latest automated spread engine. The Stellar spreadMachine, a server-based, cross-market, cross-product spreading tool, automatically works inter-market spreads, manages leg orders and

balances the spreads as required. Complex trading strategies can be implemented, with the capability to execute spreads with multiple legs. The spreadMachine is fully compatible with all of Stellar's powerful synthetic order types. From icebergs to bracket orders, Stellar's unparalleled flexibility offers the user efficient management and execution of complex strategies.

Stellar spreadMachine operates at the core of the trading system - it is a server-based system designed for deployment within exchange colocation facilities. This allows it to build upon the high performance order routing engine within the Stellar architecture and respond to market movement quickly and effectively.

In addition, Stellar Trading Systems includes remote trading, the Stellar API, and Stellar tradeMachine, the last of which can be used to create automated order entry commands through Excel without further programming knowledge.

For more information about Stellar Trading Systems, contact an Advantage Futures client representative at 312.347.4800 or email [ConactUs@advantagefutures.com](mailto:ConactUs@advantagefutures.com).

#### STELLAR TRADING SYSTEMS FUNCTIONALITY HIGHLIGHTS:

- All standard trading screens, including grid view, price ladder, price ticker, and time and sales
- Powerful synthetic order types, including stops, icebergs, brackets, OCO's, and conditional orders
- Stellar spreadMachine for unrivaled server-based spreading functionality and execution
- 100% open Stellar API, for implementing fast and powerful automated trading solutions
- Server-based synthetic order functionality
- Multiple workspaces per trader for quick switching to alternate screen layouts
- Full account based pre- and post-trade limit checking
- Fast Excel integration using the Stellar RTD server